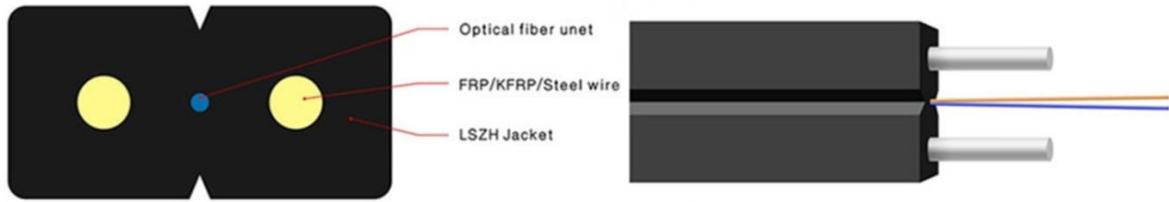


Technical Data Sheet

FTTH - Bow-type drop cables for access network

Product description : Steel Wire Strength Member 2.0*3.0 1 Core , G.6572; Steek : 0.45mm ; LSZH Sheath

1G.657A2 Fiber Cable Structure Diagram



Product structure

1) Characteristics of fiber :

Parameter	Value		
Fiber type	G.657A2		
Mode field diameter at 1310um	8.6~9.5 ± 0.4 μm		
Cladding diameter	125.0 ± 0.7 μm		
Core concentricity error	≤ 0.5 μm		
Cladding non-circularity	≤ 1.0 %		
Coating diameter	245 ± 10 μm		
Attenuation	@ 1310 nm	≤ 0.40 dB/km	
	@ 1383 nm	≤ 0.40 dB/km	
	@ 1550 nm	≤ 0.30 dB/km	
Zero dispersion wavelength	1300nm~1324nm		
Zero dispersion slope	≤ 0.092 ps/(nm ² .km)		
Cable cut-off wavelength	≤ 1260 nm		
Proof stress	≥ 0.69 Gpa		
Polarization mode dispersion	≤ 0.2 ps/√km		
Macrobend loss	Radius (mm)	15	10
	Number of turns	10	1
	Max.at 1550nm(dB)	0.25	0.75
	Max.at 1625nm(dB)	1.0	1.5
Fiber color code :			
Number	1		
Color	Blue		

2) Non-metallic strength member :

Amount 2 PCS
Material Phosphatized Steel Wire
Diameter 0.45±0.10 mm

3) Outer sheath :

Material LSZH - Low smoke zero halogen
Color Black
Diameter 2.0 H × 3.0 W ± 0.1 mm
Marking As per Customer Request

4) Sheath printing :

FTTH◆GJXH◆1CORE◆G.657A◆07/2020◆
0001M...0002M...1000M

(◆ Represents a space . Bigger meter number in

Revision history

Rev	Description	Date

Prepared by : _____ Date : 27th Jul 2020
Approved by : _____ Date : 27th Jul 2020
Form Number : F61 Table Version : REV1 Page : 1 of 1

Referred standard

- ITU/T G.657.A2
- IEC 60754-1 and 2
- IEC 60332-1
- YD/T 1997.1-2014
- IEC 61034-2
- ISO/IEC 11801 Generic cabling for customer premises

Tensile properties

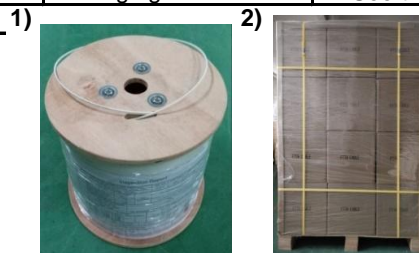
No.	Item	Units	Index
1	Pulling Load (short time)	N	200
2	Pulling Load (long time)	N	100
3	Crush load (short time)	N/100mm	1000
4	Crush load (long time)	N/100mm	500
5	Bend radius (static)	mm	20
6	Bend radius (Dynamic)	mm	40

Environmental conditions

No.	Item	Units	Index
1	Storage temperature range	°C	-20 to +70
2	Install the temperature range	°C	-0 to +70
3	Operating temperature range	°C	-20 to +70

Package

No.	Item	Index
1	Length and packaging	1000m/Plywood Reel
2	Plywood reel size	250×110×230mm
3	Carton size	260×260×250mm
4	Net weight	7.5 kg/km
5	Gross weight	9.0 kg/Box
6	Packaging details	See the picture below 1), 2) .



Structure type code meaning

GJX - Butterfly drop cable ; (Unsigned) - Metallic strength member; H - LSZH-Low smoke zero halogen sheath .

POWER

LINK

FIBER OPTICAL CABLE

www.aidgroup.com.co - info@aidgroup.com.co

Note: The specifications are subject to change without prior notice.